

TYPE	UPWARD PUSHING FORCE (kN)			HOLDING FORCE (kN)	POSITION "0"	A	B	C	D	E	F	G	H	L	WEIGHT(kg)
	Fa	Fb	Fc												
DBSBT01-0130-A	209	172	131	130	600	310	100	20	35	260	310	12	18	150	
DBSBT11-0215-A	380	290	195	215	700	350	100	20	45	275	350	12	26	225	
DBSBT21-0270-A	546	361	162	270	623	470	180	15	50	457	508	8	27	380	
DBSBT21-0300-A	560	400	230	300	700	470	180	20	50	350	470	12	30	395	
DBSBT31-0375-A	680	500	308	375	750	500	180	20	70	380	500	12	36	510	
DBSBT41-0500-A	874	712	540	500	860	600	270	20	70	500	600	14	36	810	

(\* ) VARIABLE WITH VERTICAL FLOAT

**NOTE**

Rail hardness between 200 and 270 HB  
( $\sigma = 70 \div 90 \text{ daN/mm}^2$ )

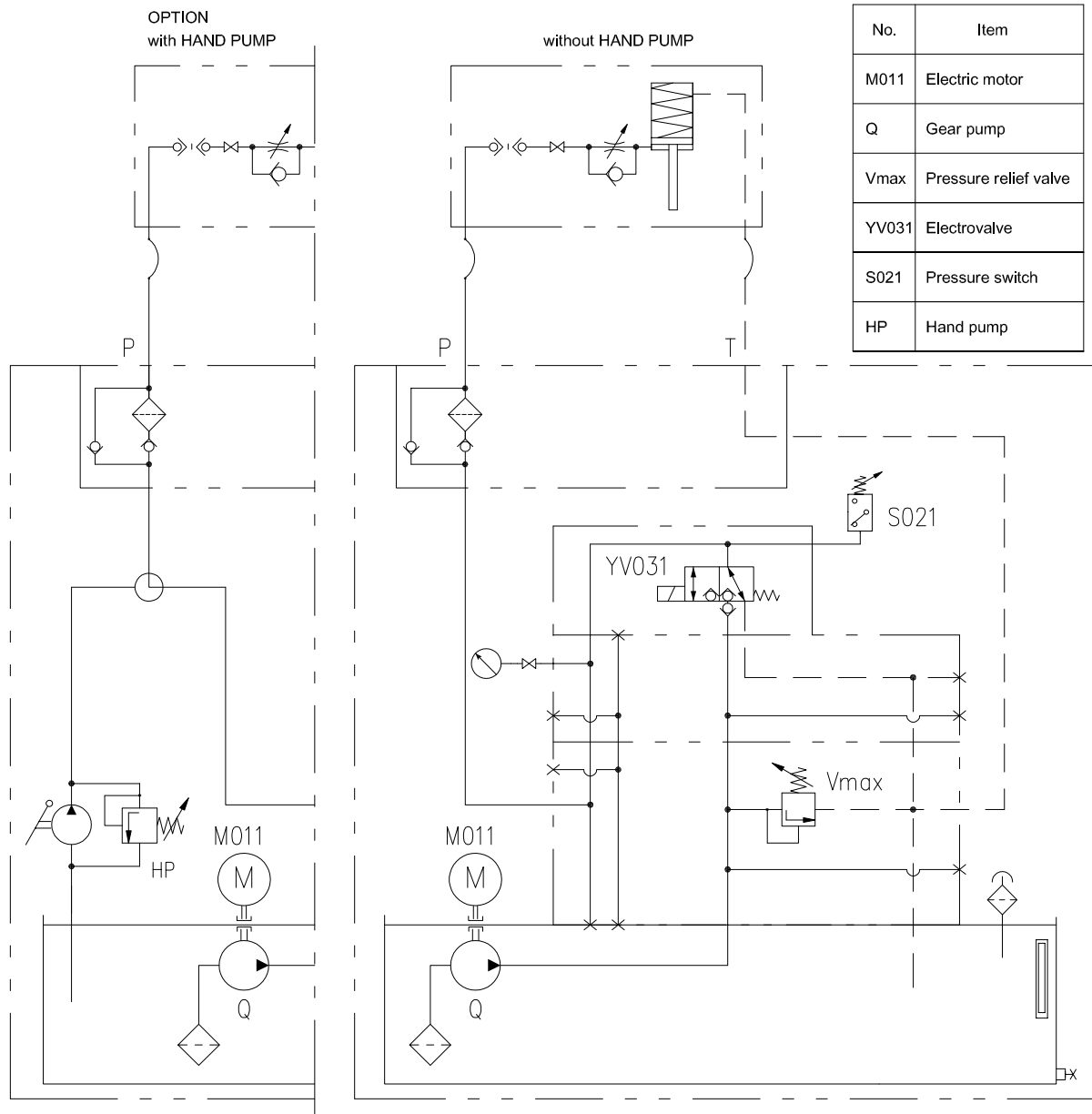
In case of different values we must be informed at order because this could affect the rail clamp functioning.

FORCES AND DIMENSIONS INDICATED ARE REFERRED TO MAXIMUM HEAD WIDTH OF RAIL 120 mm.  
FOR RAIL WITH HEAD WIDTH GREATER THAN 120 mm PLEASE CONTACT OUR TECHNICAL OFFICE

(\*\*) CONNECTION SCREWS CLASS :10.9 ARE TO BE FORESEEN

All dimensions in mm

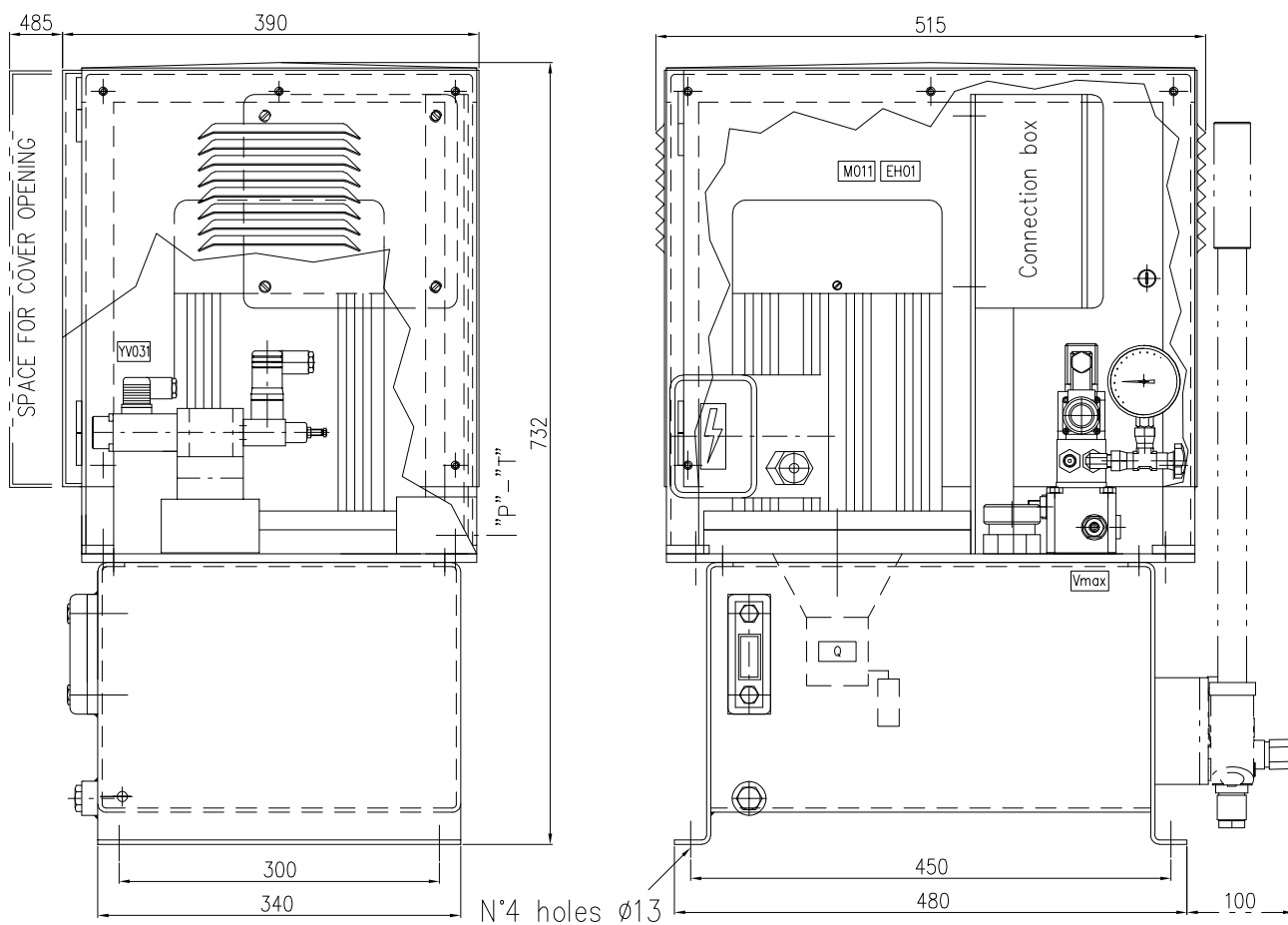
Alterations reserved without notice



TYPE	* M011 (kW) 400V-50Hz	Q (l/min) (cm <sup>3</sup> /rev)	Tank capacity (l)	* YV031	P-T	Weight without HP (kg)	Weight with HP (kg)	OPENING TIMES (s) (suitable for one brake)				
								DBSB01 DBSBT01	DBSBT11	DBSB21 DBSBT21	DBSBT31	DBSBT41
SCI-DBSB10-5	1,5	4,5 3,2	10	24V DC-30W	G3/8"	60	65	2,2	2,8	4,5	6	7,5
SCI-DBSB20-7.5	3	7 4,8	20	24V DC-30W	G3/8"	75	80	1,4	1,7	2,7	3,7	4,7
* = OTHER FEEDING VOLTAGE ON REQUEST								OTHER OPENING TIMES ON REQUEST				

CALIBRATION		
Type of brake	Pressure relife valve	Pressure switch
DBSB01/DBSBT01	18 MPa	↑15-13 ↓ MPa
DBSBT11	24 MPa	↑21-20 ↓ MPa
DBSB21/DBSBT21	24 MPa	↑21-20 ↓ MPa
DBSBT31	24 MPa	↑21-20 ↓ MPa
DBSBT41	21 MPa	↑18-17 ↓ MPa

### SCI-DBSB20-7.5



### SCI-DBSB10-5

